

## **Property Data Map/City of Toronto Orthophoto Overlay in ArcMap 9.0**

### **Accessing the 2004 Toronto Property Data Maps (PDMs):**

Toronto PDMs originate in Autocad format and feature a **.dwg** file extension. The first step is to download the .dwg file from the Maps and Data Resources at Ryerson University Library (MADAR) website. Type the following URL into your web browser to access the 2004 Toronto Property Data Maps Index Map:

<http://www.ryerson.ca/madar/geospatial/libdata/indmaps/PDM/indexmap.html>

Otherwise, navigate through the MADAR website by searching via the 'What's New' link, or clicking on the 'Geospatial Data' tab, followed by the Search Geospatial Resources tab to access a keyword search. Use the Index Map to navigate and download the specific portion of Toronto required.

### **Accessing the JD Barnes 2002 Colour Orthophotos:**

2002 Colour Orthophotos downloadable via the MADAR website originate in a Mr. Sid compression format, featuring a **.sid** file extension. To download the desired orthophoto and view it in ArcMap 9.0, type the following URL into your web browser:

<http://8090-prod.library.utoronto.ca.innopac.lib.ryerson.ca/maplib/scholarp/>

Otherwise, navigate through the MADAR website by searching via the 'What's New' link, or clicking on the 'Geospatial Data' tab, followed by the Search Geospatial Resources tab to access a keyword search. Use the Index Map to navigate and download the specific portion of Toronto required.

**Note:** In order to view a **.sid** file in ArcMap, you **MUST** download **BOTH** the **.sid** and **.sdw** files associated with the specific portion of Toronto required.

## Overlaying the PDMs and Toronto Orthophotos in ArcMap 9.0

**Step 1** – Launch ArcMap by clicking **Start – Programs – ArcGIS – ArcMap**.

**Step 2** – Add the PDM to the Data Frame by clicking the ‘Plus Sign’ circled in Figure 1 below. Then navigate to the desired file and click on it as illustrated in Figure 1 below.

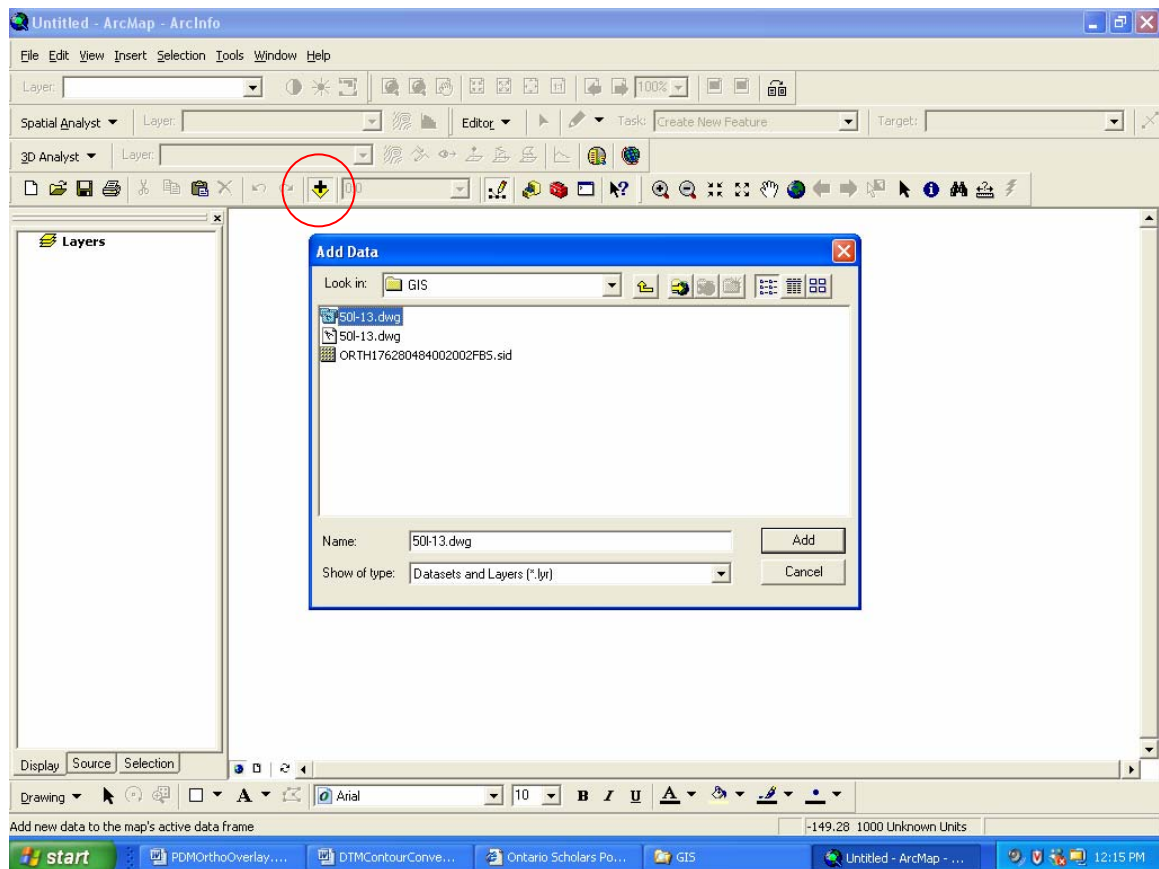


Figure 1

**Step 3** – After adding the PDM to the Data Frame, the file should resemble the image in Figure 2 below.

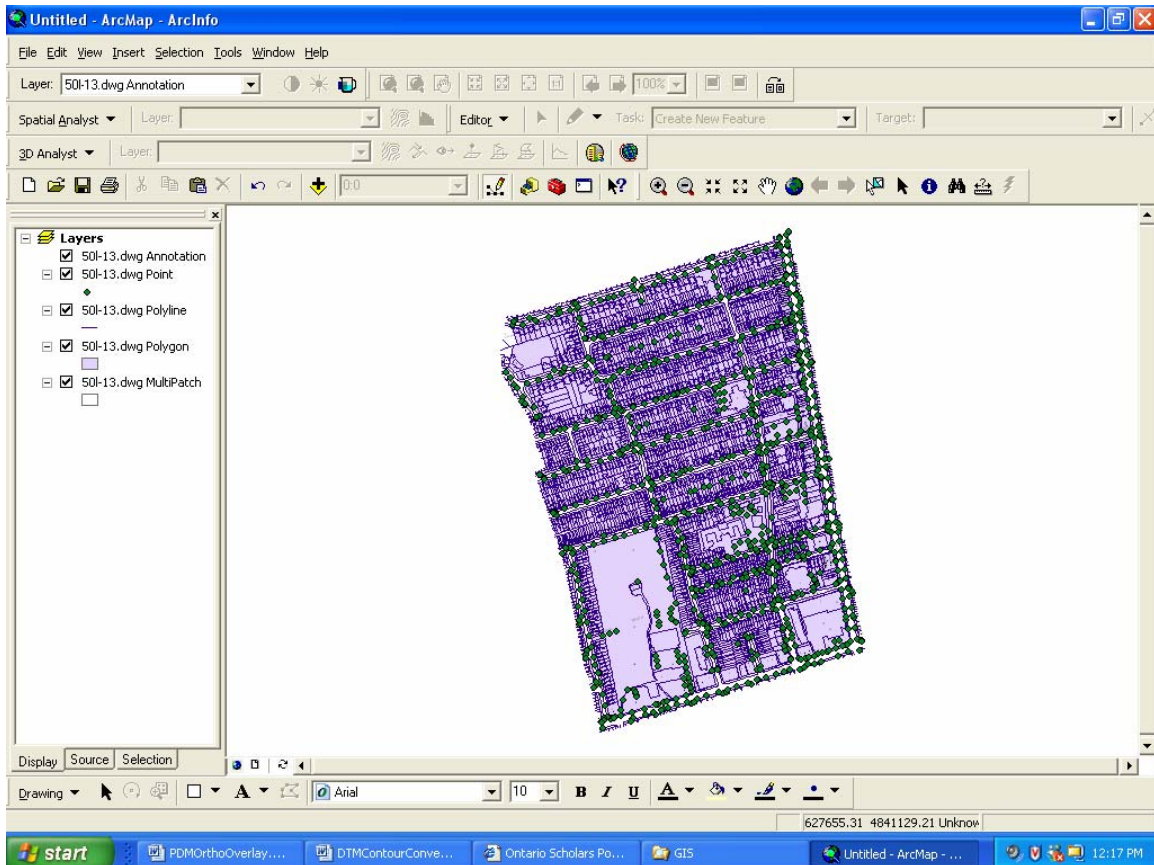


Figure 2

**Step 4** – To overlay the downloaded Orthophoto with the PDM in ArcMap 9.0, add the PDM to the Data Frame by clicking the ‘Plus Sign’ circled in Figure 3 below. Then navigate to the desired file and click on it to add it to the ArcMap Data Frame.

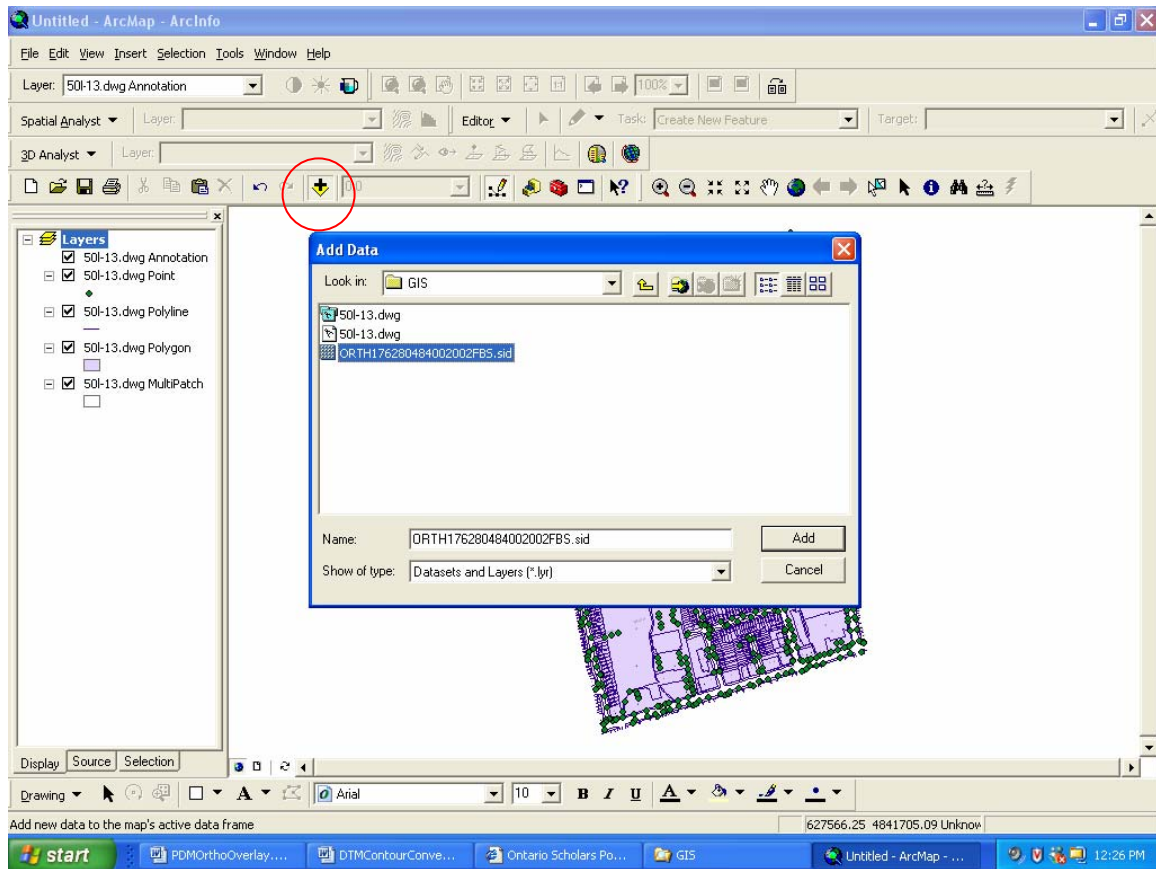


Figure 3

**Step 5** – After adding both files to the Data Frame, the files should align as illustrated in Figure 4 below.

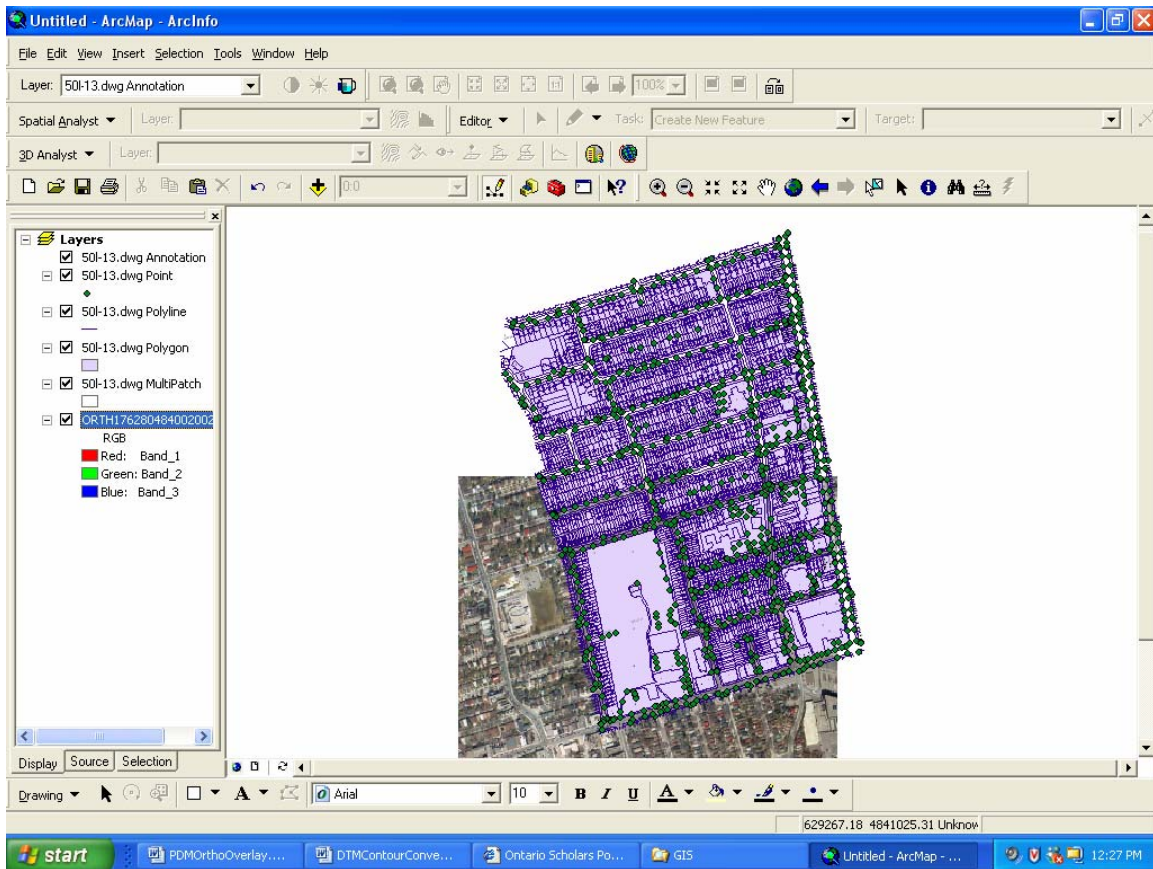


Figure 4



**Step 6** - Use the various ArcMap Tools circled in red to create a custom display of the chosen section of Toronto. For instance, zoom-in on a specific city block and deselect the polygon layer under the 'Layers' heading, to view the locations of the lot boundaries overlaid on the aerial photos (Figure 6).

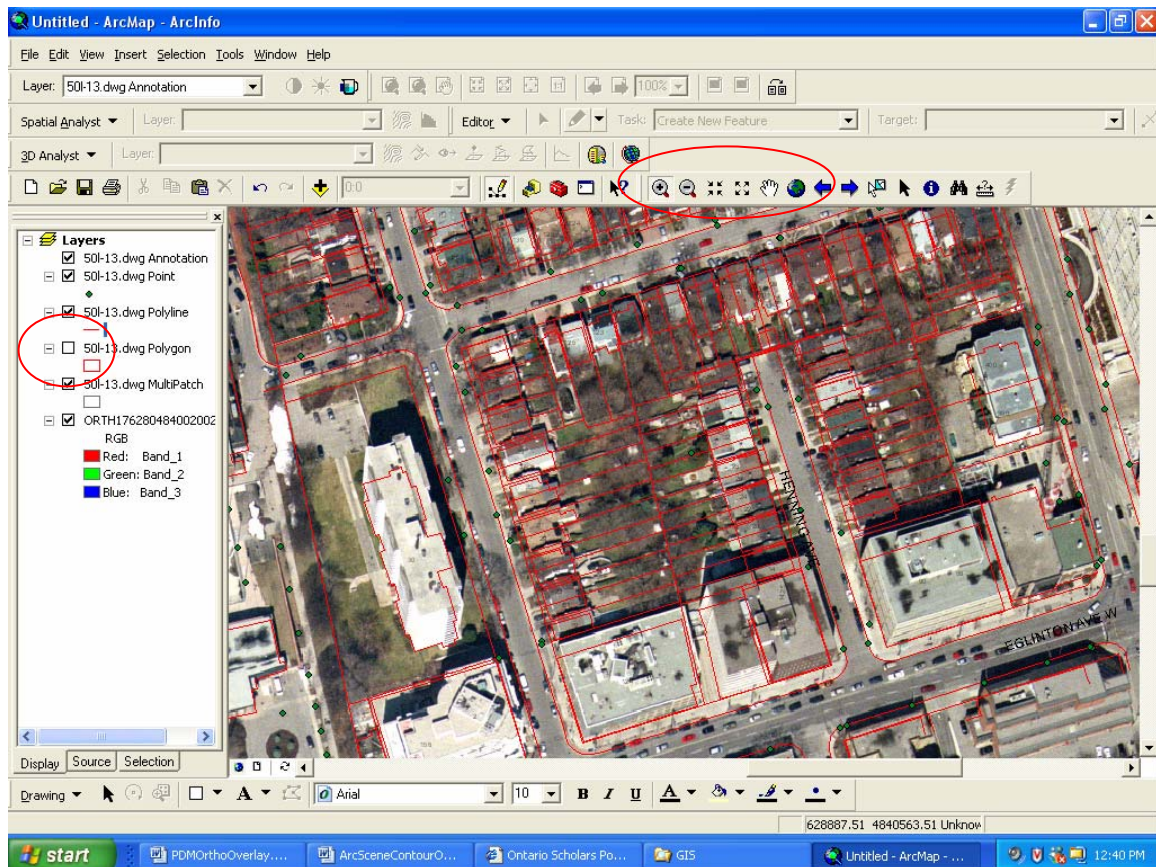


Figure 6

**Step 7:** Export the image in the ArcMap 9.0 Data Frame as a graphic (.pdf, .tiff format). In ArcMap's main menu, Click on **File – Export Map** as featured in Figure 7 below.

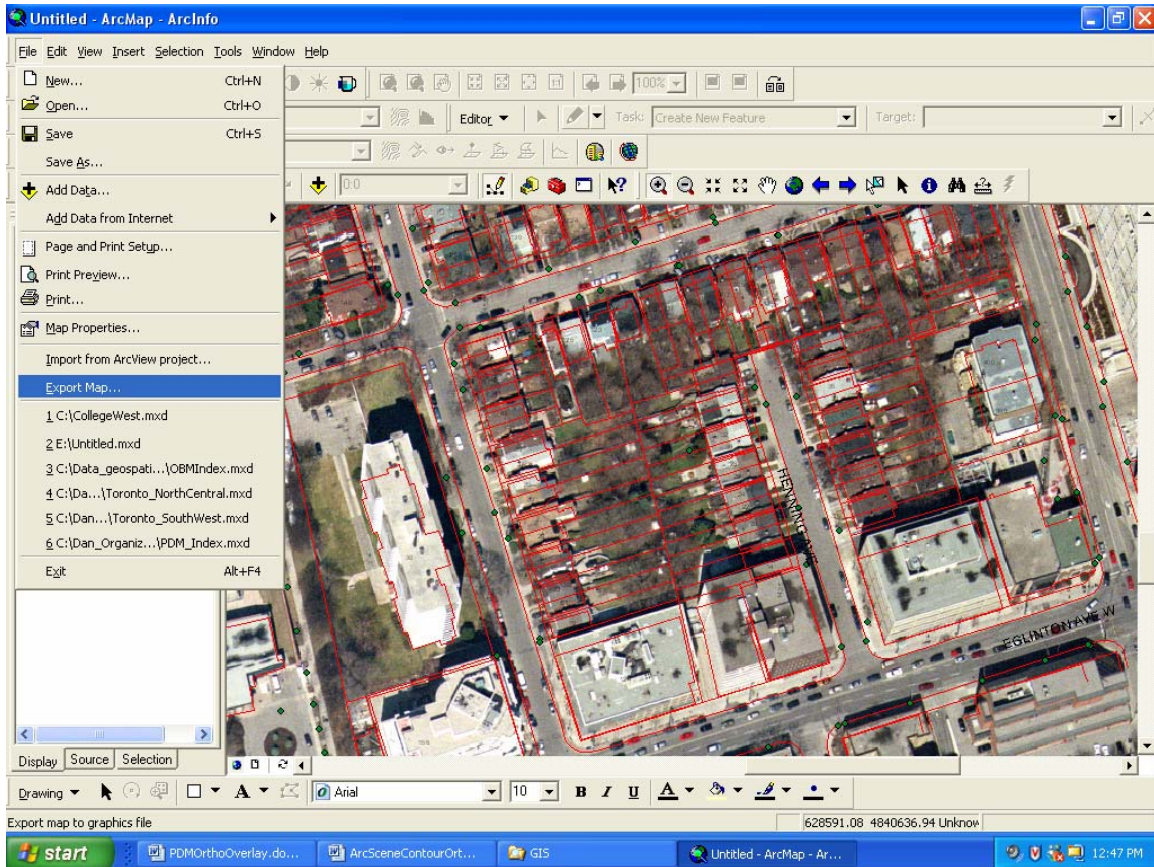


Figure 7

**Step 8:** In the Export Map dialogue box, name the output file next to the 'File Name' heading, and choose PDF (\*.pdf) beside the 'Save as type' heading. Click **Save** to export the map.

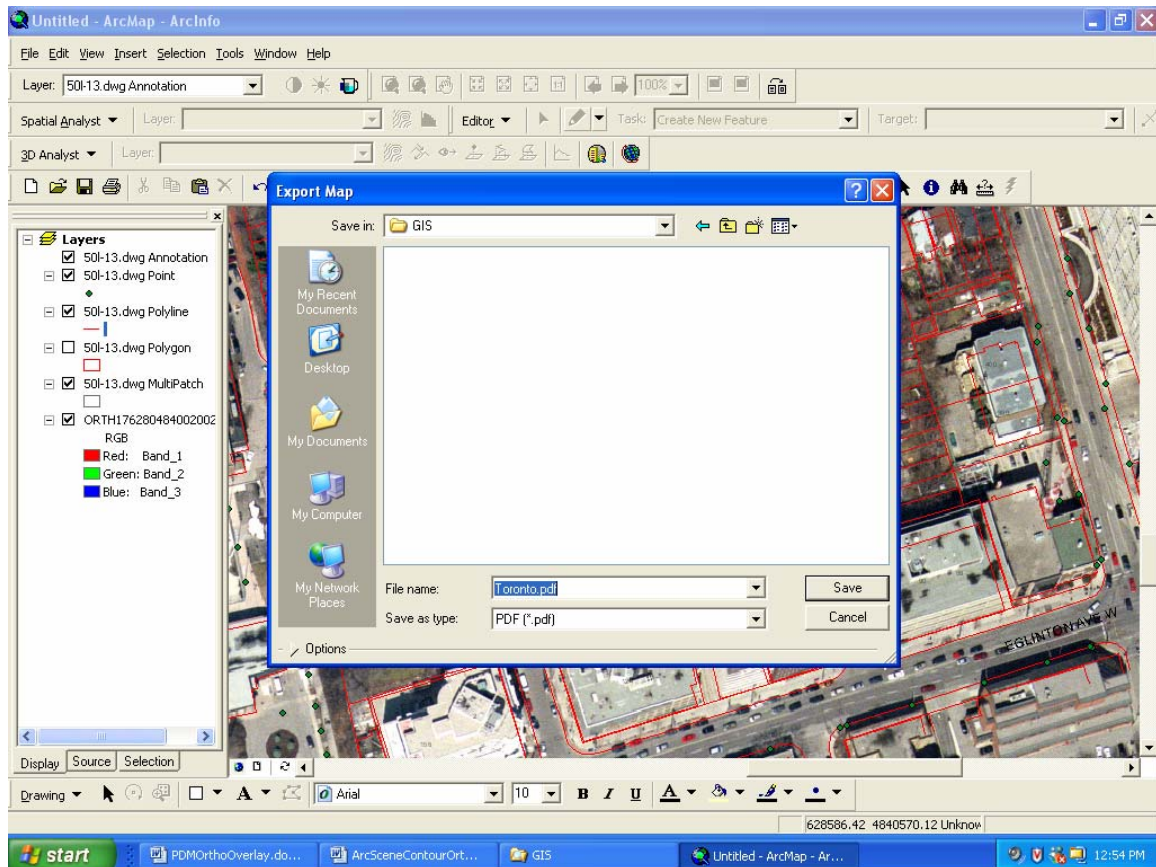


Figure 8



**Step 9** – To view the graphic output, Launch **Adobe Acrobat 7.0 Professional** by clicking **Start – Programs – Adobe Acrobat 7.0 Professional**. Browse to the .pdf file created in the export process to open it. If created successfully, the output should resemble Figure 9 below. Use the zoom tool to further refine the output desired.

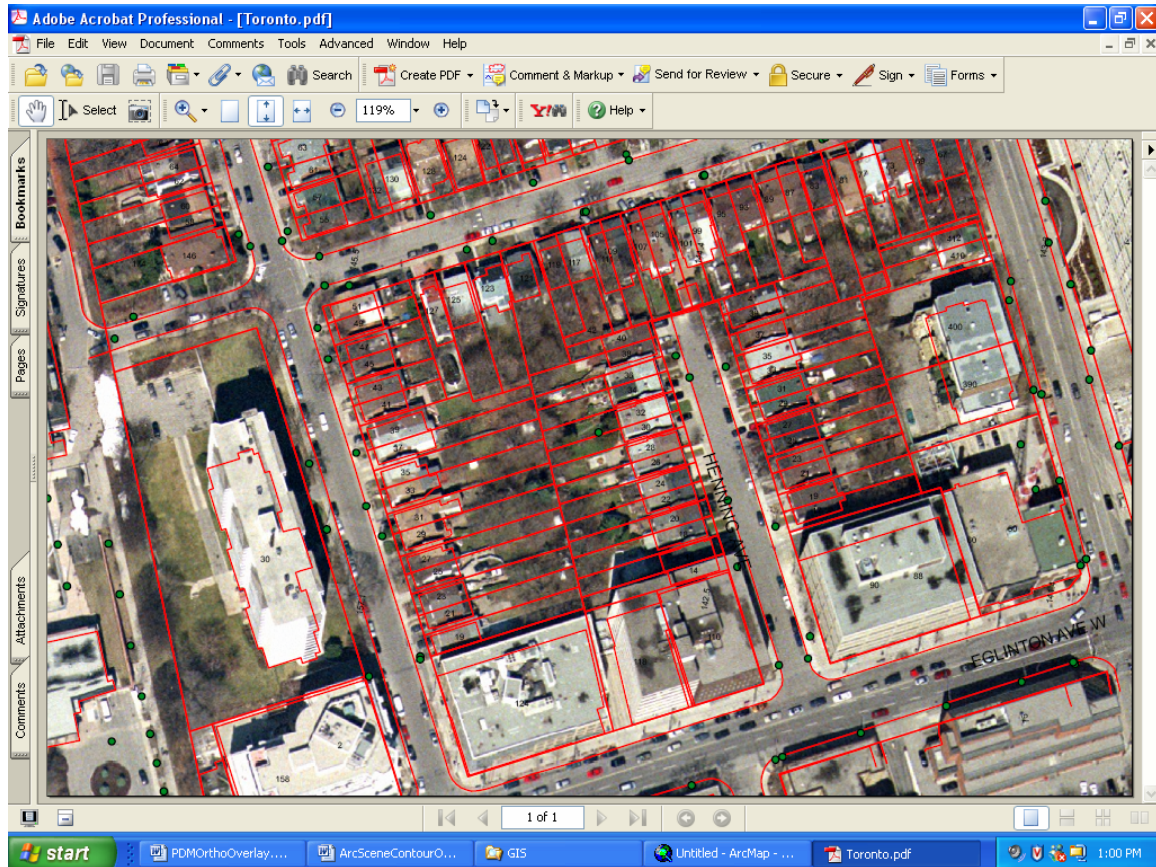


Figure 9